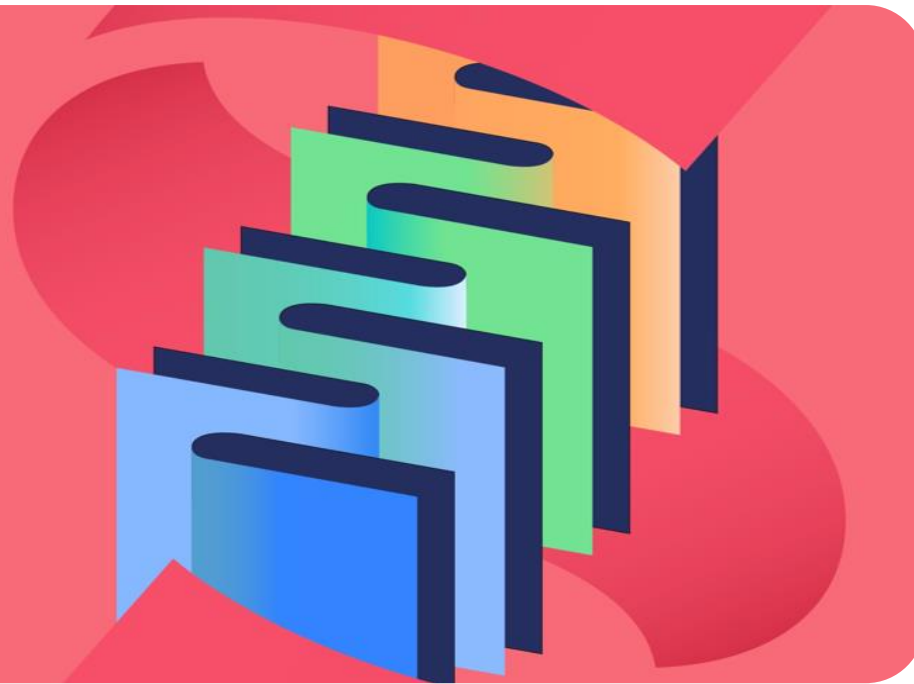


Sage Journals

Your gateway
to world-class
research journals



research journals
to world-class
your gateway



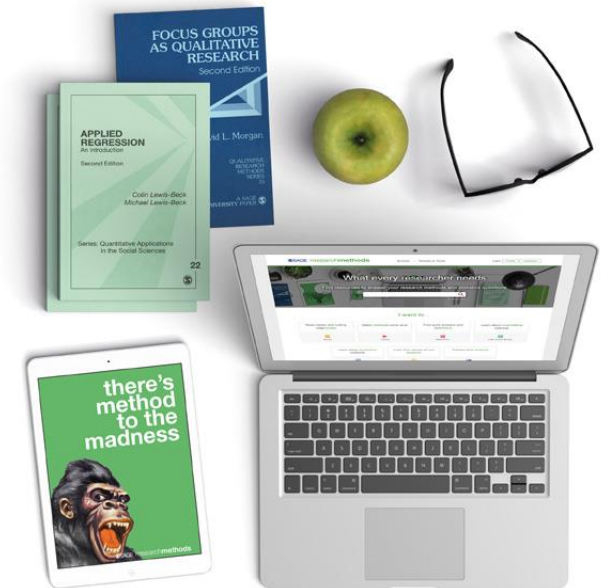
Training & Engagement Specialist:
Claudia Paicu
claudia.paicu@sagepub.co.uk

Opolski University
30th October 2024



Agenda

- Introduction to *Journals*
- Portfolio (Packages) with highlight on our no.1 Journals
- Relevant Metrics
- How to navigate the platform (*Journals* content and topics) – Demo



Sage – Who we are

- Starting from the principle that research and education are two essential elements in shaping society, Sara Miller McCune founded SAGE in 1965.
- SAGE is currently a global academic publisher of books, journals, and library resources, with a diverse and continuously expanding range of technologies designed to contribute to access, exposure, and engagement – important pillars of quality and innovation in the field of education.
- SAGE supports informing and educating the global community of scientists (researchers, educators, specialists, students) by offering a wide range of subjects through its editorial activity.
- SAGE Publishing is a world leader in the field of independent academic and professional publishing.



Sage – Portfolio (Packages)

Sage Journals Humanities and Social Sciences (HSS) Package

- It provides access to 750 peer-reviewed journals, with 580 journals listed in the [Journal Citation Reports](#) according to Clarivate Analytics 2023, and over 766,000 articles published in the fields of humanities and social sciences.
- Currently having a 75% of the titles which are present in the [Journal Citation Reports](#).



#1 Sage Premier Journals indexed in JCR in 2023 - Social Sciences Citation Index

Title	Subject JCR	IF	Out of total Journals
Psychological Science in the Public Interest	Psychology, Multidisciplinary (SSCI)	25.4	147
Dialogues in Human Geography	Geography (SSCI)	27.5	86
Personality and Social Psychology Review	Psychology, Social (SSCI)	10.8	63
Trauma, Violence, & Abuse	Family Studies (SSCI)	6.4	46
Trauma, Violence, & Abuse	Social Work (SSCI)	6.4	44
Journal of the American Psychoanalytic Association	Psychology, Psychoanalysis(SSCI)	1.2	13



Relevant Metrics

Term	Definition
Impact Factor	The Impact Factor is a measure of the importance of a journal and is calculated by dividing the number of citations in the JCR year by the total number of citable articles published in the two previous years.
Immediacy Index	The average number of times an article is cited in the year it is published.
Journal Citation Indicator	The algorithm used to calculate the JCI combines citation averages (like the Impact Factor) with category normalization. This calculation includes citations from the current year and prior 3 years, to citable items published in the prior 3 years. Because the JCI is normalized for each category, a JCI of 1 represents the median of that category. A JCI of above 1 means a better than average score, and a JCI of below 1 represents a below average score.
CiteScore	CiteScore measures average citations received per document published in the serial. This average is calculated using the number of times articles published in one year have cited articles published in the prior three years. This is in contrast to the JCR impact factor which looks at a two year rather than a three year publication period. The CiteScore also differs from the Impact Factor in that it counts ALL published items, not just citable items, in the denominator of their equation.
SCImago Journal Rank	SCImago Journal Rank measures weighted citations received by the serial. Citation weighting depends on subject field and prestige (SJR) of the citing serial. This is calculated in the same way as the CiteScore but with weighted citations in the numerator.
Google Scholar h5-index	Google's h5-index is calculated by finding the h-index for articles in a publication over the last five complete calendar years, where h is equal to the number of articles over a five year period that have at least h citations each.

Relevant Metrics: Impact Factor

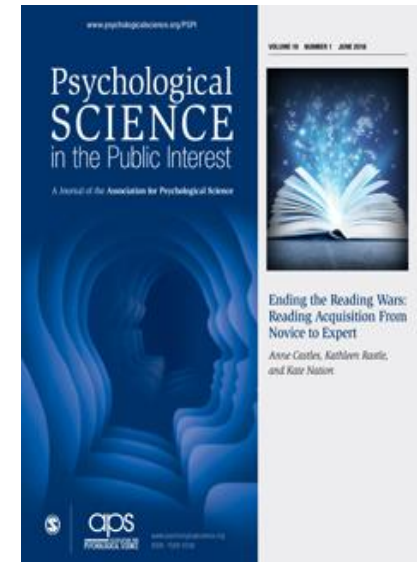
As a journal-level metric, it is frequently used as a proxy for the relative importance of a journal within its field.

Journals with a higher impact factor value are given the status of being more important, or carry more prestige in their respective fields, than those with lower values.

Impact Factor is the average number of citations received per article, last year, to the content that the journal has published two and three years ago.

Citations to articles published in 2023

Articles published in 2021 and 2022



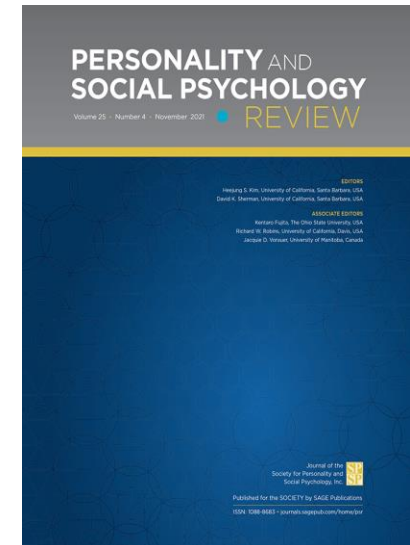
Relevant Metrics: CiteScore

Calculated as the total citations made in the CiteScore year and the prior three years, to the content published in the same period of time, divided by the total number of articles published by the journal in the CiteScore year and the prior three years.



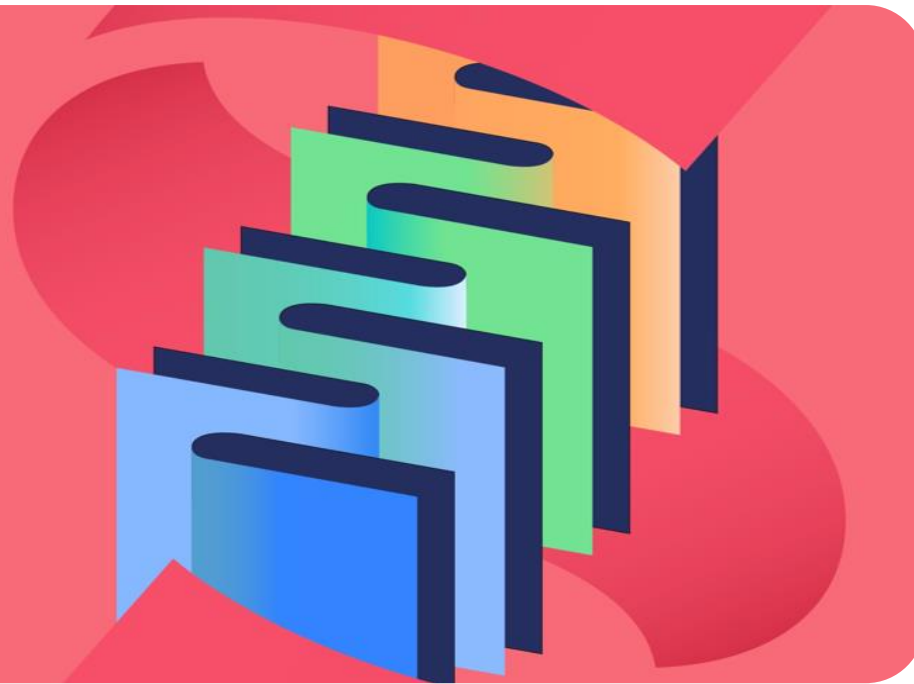
Citations to articles published in 2020-2023

Articles published in 2020-2023



Sage Journals

Your gateway
to world-class
research journals



research journals
to world-class
your gateway

Journals Platform demo

Opolski University
30th October 2024



“Our independence allows us to remain mission-driven for the long term”

Sara Miller McCune

Founder

